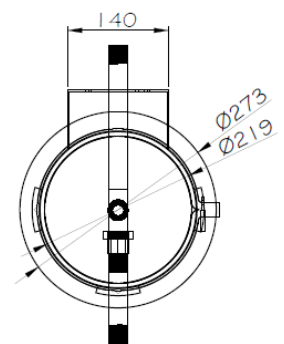
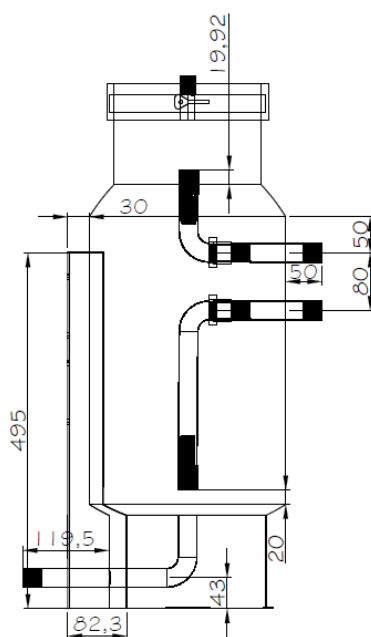
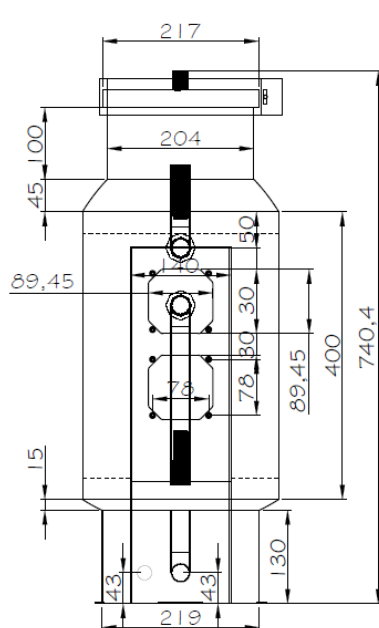


Technical information:

IONIX FS 25	
Dimensions	
Tank height	740.4 mm
Tank width	273 mm
Tank width including computer box	303 mm
Connection sizes	
Air vent	1/2"
Inlet	3/4"
Outlet	3/4"
Drain	3/4"
Operating information	
Test pressure	15 bar
Maximum operating pressure	10 bar
Maximum operating temperature	90 degrees
Power supply options	
240v with volt free alarm output	Supplied with 3 pin transformer (5v) wall plug
Battery powered without alarm output	AA battery
Performance	
Tank volume	25 litres
Maximum flow rate	18 lpm
Estimated capacity of resin @ xx litres	
100 µS/cm	10,000
200 µS/cm	5,000
300 µS/cm	3,325
400 µS/cm	2,500
500 µS/cm	2,000
600 µS/cm	1,675
700 µS/cm	1,425
800 µS/cm	1,250





IoniX Filling stations are supplied with a pre-installed combined water and electrical conductivity meter. There are two options available

1. Battery powered – No BMS connection.
2. Mains powered – BMS connection via volt free alarm.

Mains powered units require a 240v standard UK 3 pin plug outlet.

The meter is supplied with a pre connected AC/DC 5v transformer plug, which can simply be plugged directly in to the supplied 3 pin plug outlet.

The maximum switching voltage and switching power are 250VAC / 220VDC and 62.5VA / 30W.

The alarm and warning notification (audible alarm) are activated once the outlet of the IoniX FS reaches a set conductivity level (advisable limit 15 uS/cm).

The meter is unable to supply the total volume treated or current flow rate to the BMS, it can only be visually seen on the screen.

If the total volume treated & current flow rate are required to be monitored via the BMS a separate Modbus or pulse meter can be supplied, which will then be installed to the mains inlet connection to the IoniX FS.

The display shows the following information.

